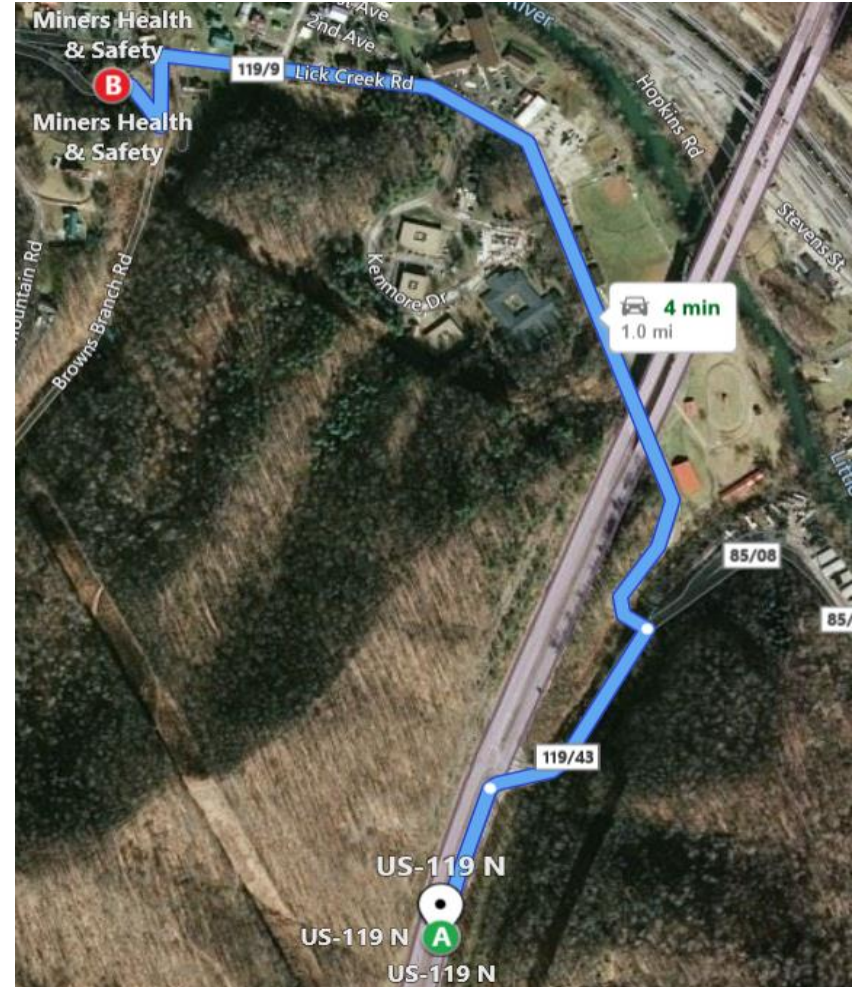


The Danville Regional Office is located at 139 Peach Court, Suite 2.  
 From Charleston (North)  
 Head South on US-119 S  
 Turn left onto Old Co7 / Riverside Drive – 0.2 miles  
 Turn left onto Lick Creek Road – 0.2 miles  
 Continue onto Lick Creek Road – 0.4 miles  
 Turn left onto Brown's Branch Road – 230 feet  
 Turn right onto Peach Court



The Danville Regional Office is located at 139 Peach Court, Suite 2.  
 From Logan (South)  
 Head North on US-119 N  
 Turn right onto Old Co7 / Riverside Drive – 0.2 miles  
 Turn left onto Lick Creek Road – 0.2 miles  
 Continue onto Lick Creek Road – 0.4 miles  
 Turn left onto Brown's Branch Road – 230 feet  
 Turn right onto Peach Court