

9 North (West Jarrel's Mains)



SELECTED SYMBOLS used in WVOMHS&T Mapping (and selected pre-explosion mine ventilation information)

OBSERVED CONDITION OF ROOF PANS	
	No well-defined bending of roof pans by wind forces
	Minor to Moderate bending of roof pans by wind forces
	Severe bending of roof pans
	Indicated wind-force direction (pans bent >90°, except when gray)
	Indicated "final force" direction (usually "non-pan" light-weight structures like paper or plastic)
	Intake airway
	Neutral airway
	Return airway
	Temporary curtain (these were installed post-explosion)
	Roof pans not rusted
	Roof pan edges, only, rusted
	Roof pans are rusted
	Initial wind-force direction
	Subsequent wind-force direction
	Pan bending from reflected forces
	Approx. location of victims (names are listed in Section 5.2)
	Approx. location of water pool

* Depiction is approximate; not all air paths are indicated.

Map Symbols used to indicate the orientations of Impacted Dust on Protruding or Standing Structures

	Both sides - thickest on the left
	Only on Left - heavy
	No impacted dust, either side
	Only on Right - heavy
	Both sides - thickest on the right
	Both sides - heavy
	Both sides - light
	Only on Left - light
	Only on Right - light

Roof Bolt Heads

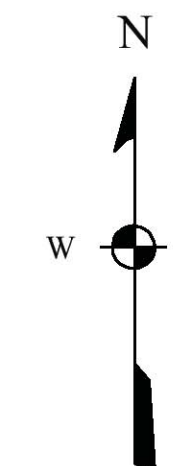
Pipe Couplers = PC

Standing Jacks = SJ

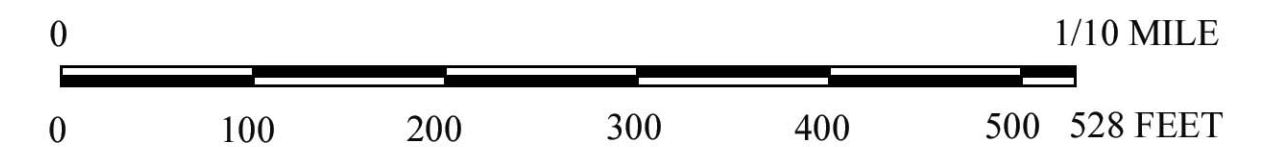
Other Structures (see abbreviations, below)

Belt Structure = BS Belt Chain = BC Bolt Plate = BP
 Belt Roller = BR Cable Bolts = CB Chain Hanger = CH
 Fire Valve = FV Header Board = HB Light Fixture = LF
 Monorail Hanger = MH Propsetter = PS Roof Pan = RP
 Roof Ledger = RL Square Post = SP Wire Roof Mesh = WRM

The following notation is used to indicate where coal samples or dust samples were collected:
 Channel Samples (coal) = # CS-#
 Impact Samples (dust) = # IS-#-source

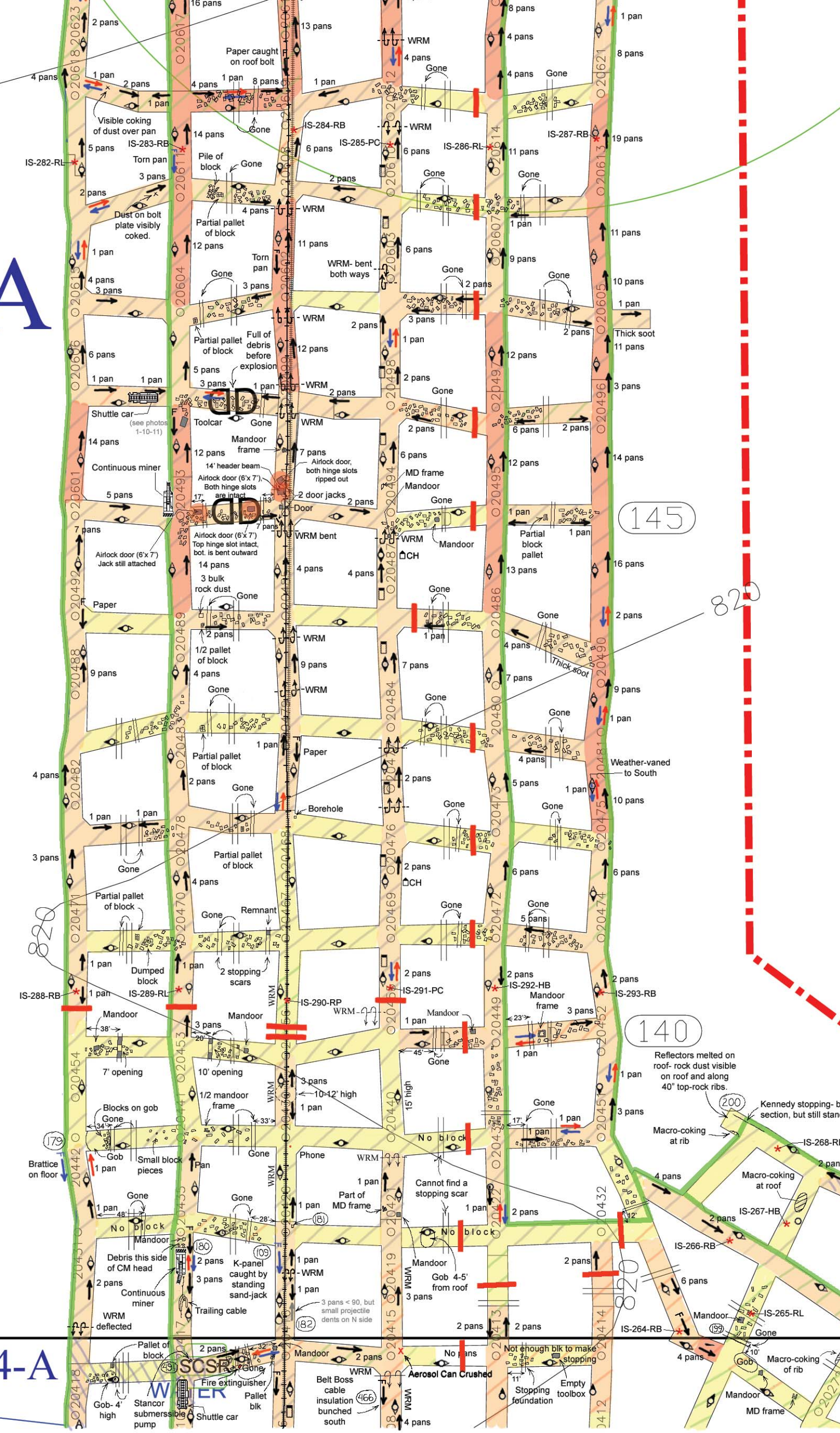


SCALE



SHEET 1-A

8 North (North Jarrel's Mains)



SPCS WV-S NAD 27: E1,824,200

SPCS WV-S NAD 27: E1,827,400

47-005-00535 (8608)
 1746.273

 ACTIVE (GPS)

SELECTED SYMBOLS FROM UBB BASE MAP (Base map supplied by UBB shortly after April 5, 2010)

	BELT HEAD		PERMANENT STOPPINGS
	TRACK		WET SEALS
	EXISTING BELT		OVERCAST
	CO MONITOR		AIRLOCK DOOR
	BOX CHECK		REGULATOR
	MAN DOOR		COAL CONTOURS
	ACTIVE OR INACTIVE GAS WELL		STREAM
	PLUGGED GAS WELL		INTERMITTENT STREAM



Flames and Forces Map Upper Big Branch Mine Explosion, 2010

West Virginia Office of Miners' Health, Safety, and Training
February 2012

