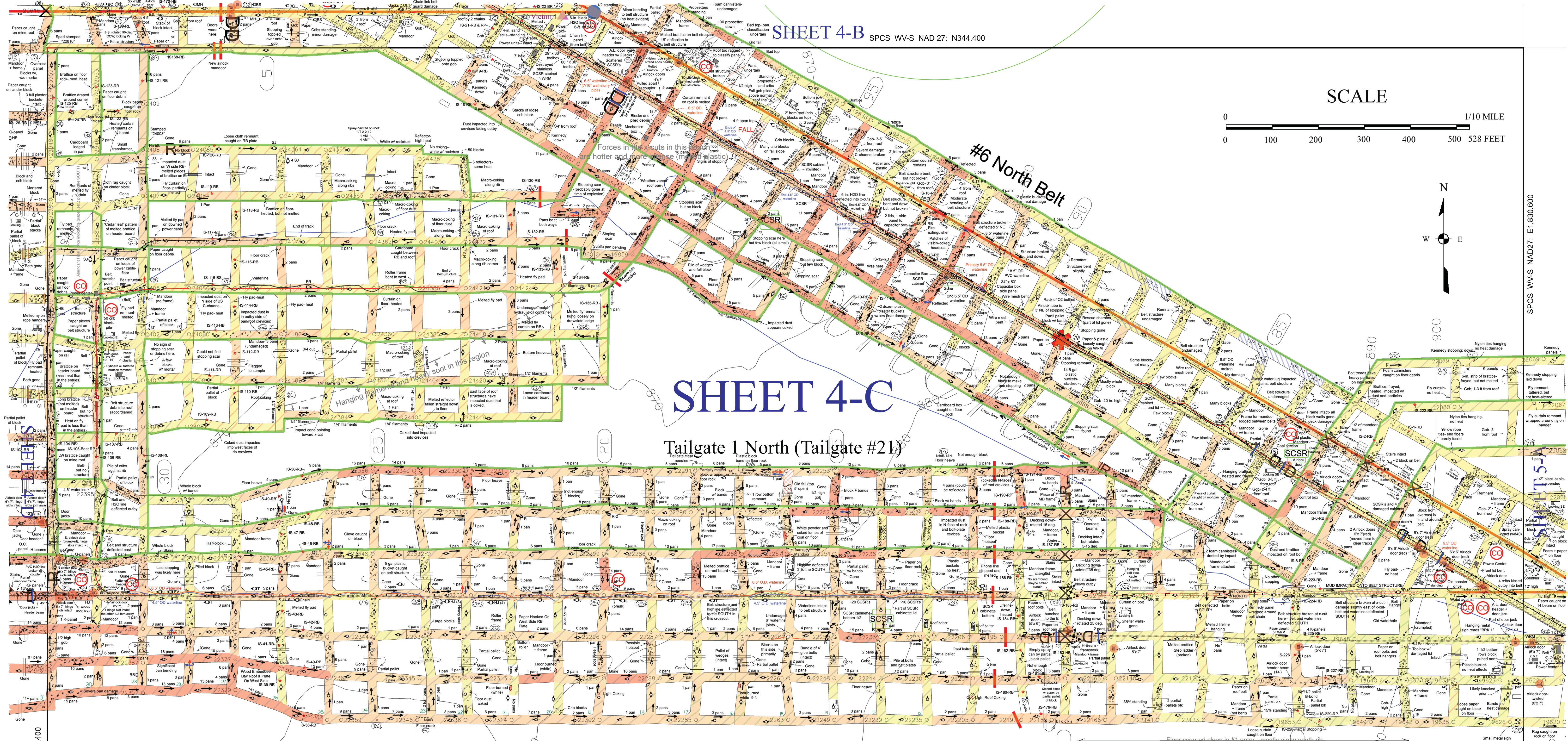


SHEET 4-C

Tailgate 1 North (Tailgate #21)



SELECTED SYMBOLS FROM UBB BASE MAP (Base map supplied by UBB shortly after April 5, 2010)

● BELT HEAD	— PERMANENT STOPPINGS
++++ TRACK	— WET SEALS
— EXISTING BELT	— OVERCAST
○ CO MONITOR	□ AIRLOCK DOOR
□ BOX CHECK	R REGULATOR
— MAN DOOR	— COAL CONTOURS
○ ACTIVE OR INACTIVE GAS WELL	— STREAM
○ PLUGGED GAS WELL	— INTERMITTENT STREAM

Map Symbols used to indicate the orientations of Impacted Dust on Protruding or Standing Structures

Roof Bolt Heads	○ Both sides - thickest on the Left
Pipe Couplers = PC	○ Only on Left - heavy
Standing Jacks = SJ	○ No impacted dust, either side
	○ Only on Right - heavy
	○ Both sides - thickest on the Right
	○ Both sides - light
	○ Only on Left - light
	○ Only on Right - light

SELECTED SYMBOLS used in WVOMHS&T Mapping (and selected pre-explosion mine ventilation information)

OBSERVED CONDITION OF ROOF PANS	▨ Roof pans not rusted
▨ No well-defined bending of roof pans by wind forces	▨ Roof pan edges, only, rusted
▨ Minor to Moderate bending of roof pans by wind forces	▨ Roof pans are rusted
▨ Severe bending of roof pans	→ Initial wind-force direction
→ Indicated wind-force direction (pans bent >90°, except when gray)	→ Subsequent wind-force direction
→ Indicated "final force" direction (usually "non-pant" light-weight structures like paper or plastic)	R → Pan bending from reflected forces
VENTILATION *	— OTHER SYMBOLS
— Intake airway	△ Approx. location of victims
— Return airway	□ Approx. location of water pool
— Temporary curtain (these were installed post-explosion)	

Flames and Forces Map

Upper Big Branch Mine Explosion, 2010

West Virginia Office of Miners' Health, Safety, and Training
February, 2012

